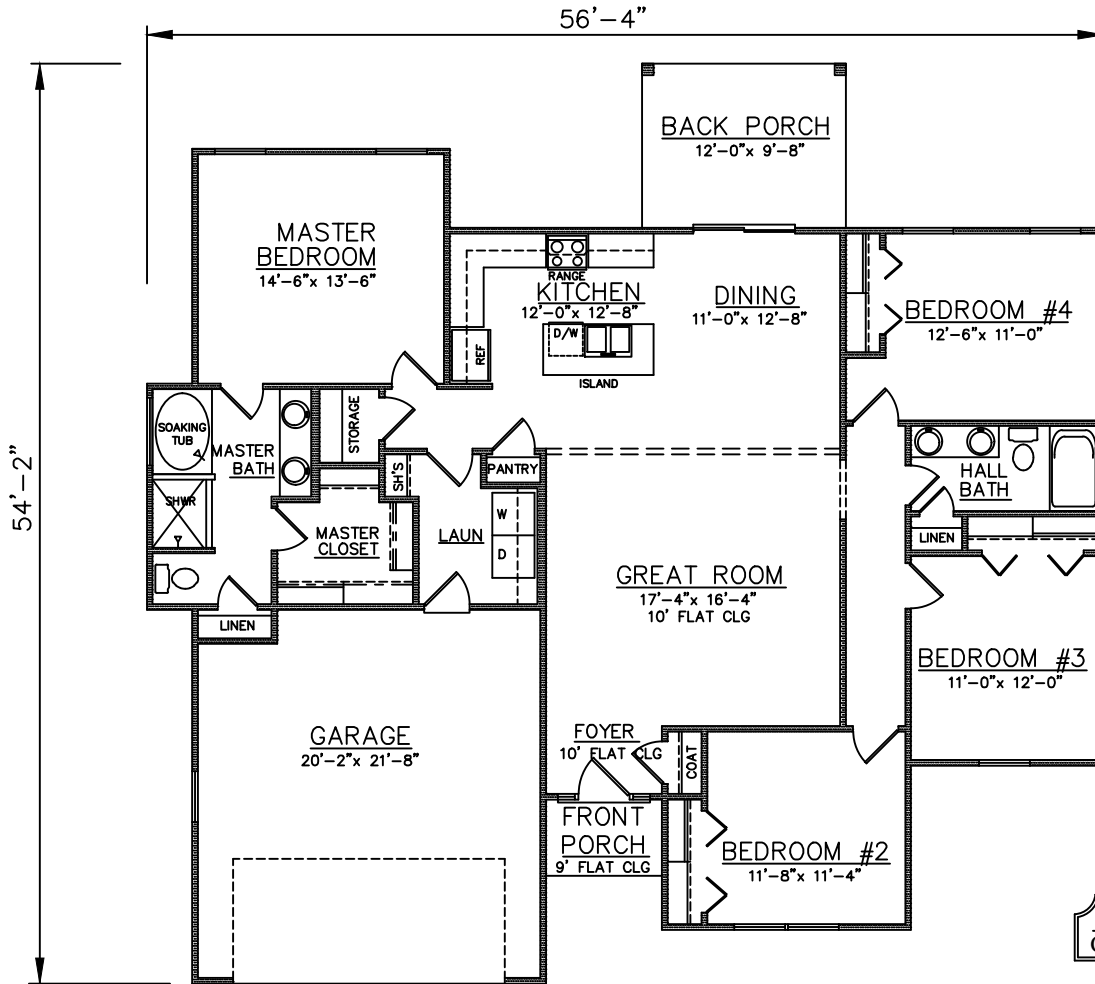




STUCCO EXTERIOR

FRONT ELEVATION

STONE FOUNDATION AT FRONT



FLOOR PLAN

PLAN NO.
CW1784/2375

SQUARE FOOTAGE	
Heated Sq. Ft.:	1784
Garage:	445
Front Porch:	30
Back Porch:	116
Total Under Roof:	2375

3805 COMMUNITY ROAD
BRUNSWICK, GEORGIA
(912)265-3021
www.driggershomes.com



SERVING GLYNN COUNTY
SINCE 1962

NEW HOME COLLECTION

THE INFORMATION, PLANS, SPECIFICATIONS, AND DESIGNS APPEARING IN THESE DRAWINGS ARE THE PROPERTY OF DRIGGERS HOMES, INC.; ANY UNAUTHORIZED USE OR DUPLICATION IN WHOLE OR IN PART IS STRICTLY PROHIBITED.

THESE ARE RENDERINGS ONLY. ACTUAL FLOOR PLANS & ELEVATIONS MAY VARY FROM DRAWINGS.