

VINYL SHAKE SIDING



STUCCO EXTERIOR

FRONT ELEVATION

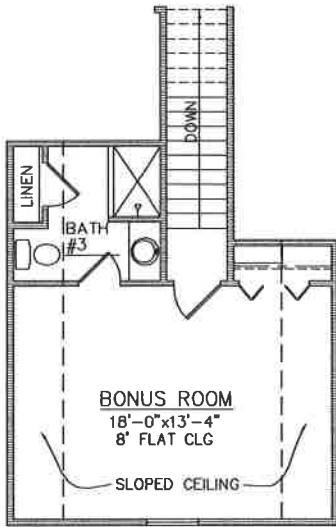
BRICK BASE

51'-8"

BACK PORCH

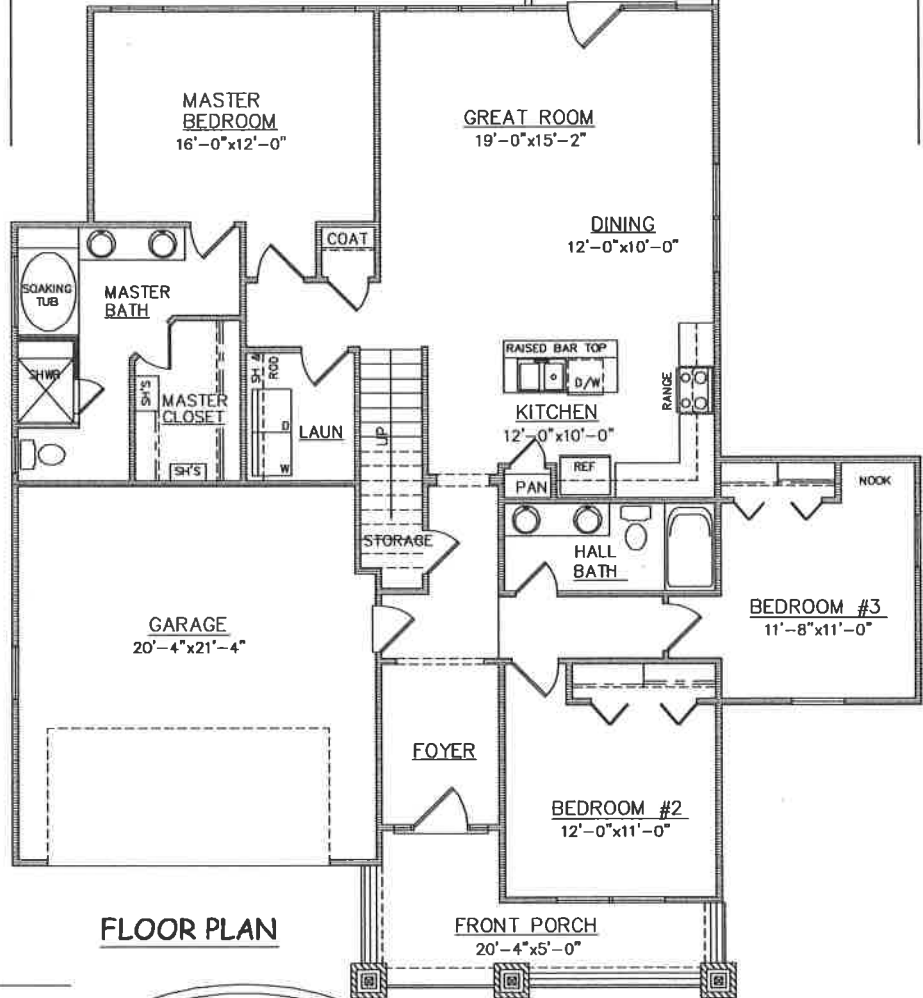
11'-0"x9'-0"

65'-0"



BONUS ROOM
18'-0"x13'-4"
8' FLAT CLG

SLOPED CEILING



FLOOR PLAN

FRONT PORCH

20'-4"x5'-0"

PLAN NO.
SW1656/2004

SQUARE FOOTAGE

LIVING:	1656
Bonus:	348
Total Heated Area:	2004
GARAGE:	448
FRONT PORCH:	125
BACK PORCH:	99
TOTAL:	2676

3805 COMMUNITY ROAD
BRUNSWICK, GEORGIA
(912)265-3021
www.driggershomes.com



SERVING GLYNN COUNTY
SINCE 1962

THE INFORMATION, PLANS, SPECIFICATIONS, AND DESIGNS APPEARING IN THESE DRAWINGS ARE THE PROPERTY OF DRIGGERS HOMES, INC.; ANY UNAUTHORIZED USE OR DUPLICATION IN WHOLE OR IN PART IS STRICTLY PROHIBITED.

NEW HOME COLLECTION

THESE ARE RENDERINGS ONLY. ACTUAL FLOOR PLANS & ELEVATIONS MAY VARY FROM DRAWINGS.