

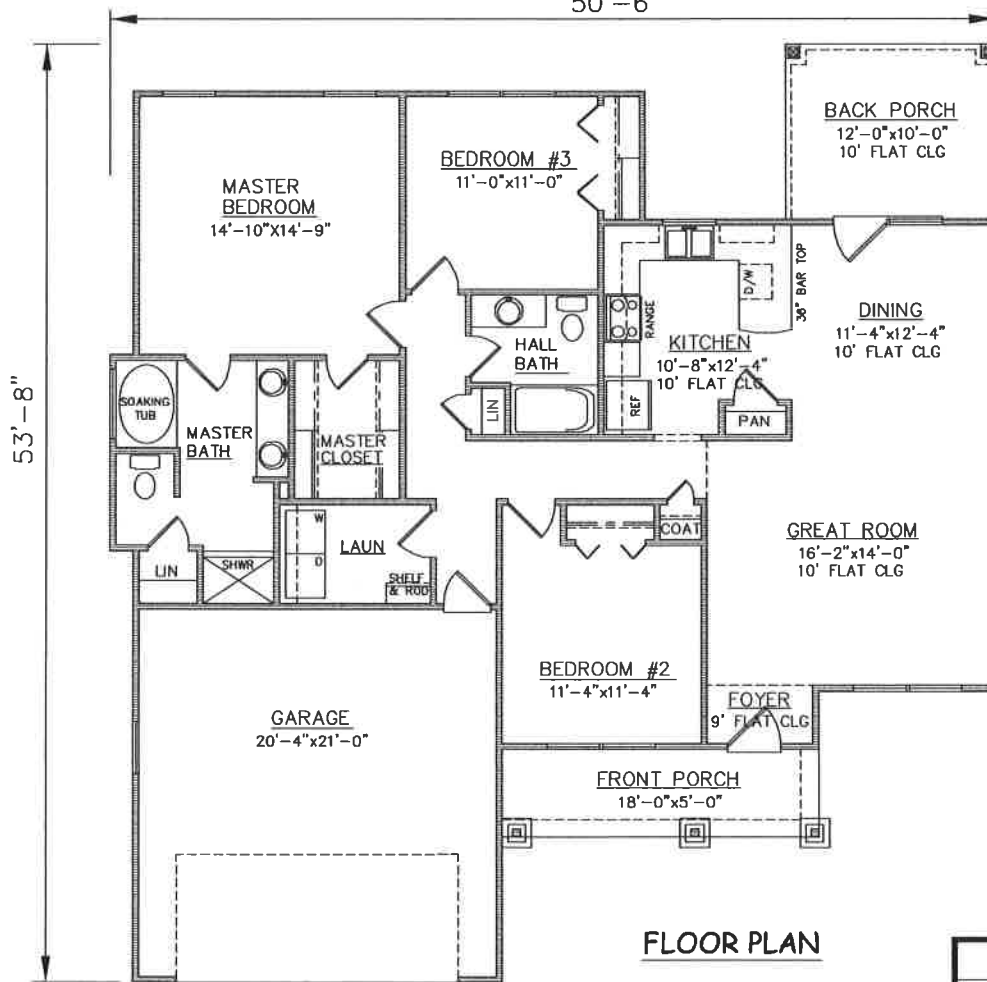
D 1405 1052 CLEARWATER LANE

D



FRONT ELEVATION

50'-6"



FLOOR PLAN

PLAN NO. SW1521/2176

SQUARE FOOTAGE	
LIVING:	1521
GARAGE:	445
FRONT PORCH:	90
BACK PORCH:	120
TOTAL:	2176

3805 COMMUNITY ROAD
BRUNSWICK, GEORGIA
(912)265-3021
www.driggershomes.com



SERVING GLYNN COUNTY
SINCE 1962

THE INFORMATION, PLANS, SPECIFICATIONS, AND DESIGNS APPEARING IN THESE DRAWINGS ARE THE PROPERTY OF DRIGGERS HOMES, INC.; ANY UNAUTHORIZED USE OR DUPLICATION IN WHOLE OR IN PART IS STRICTLY PROHIBITED.

NEW HOME COLLECTION

THESE ARE RENDERINGS ONLY. ACTUAL FLOOR PLANS & ELEVATIONS MAY VARY FROM DRAWINGS.