



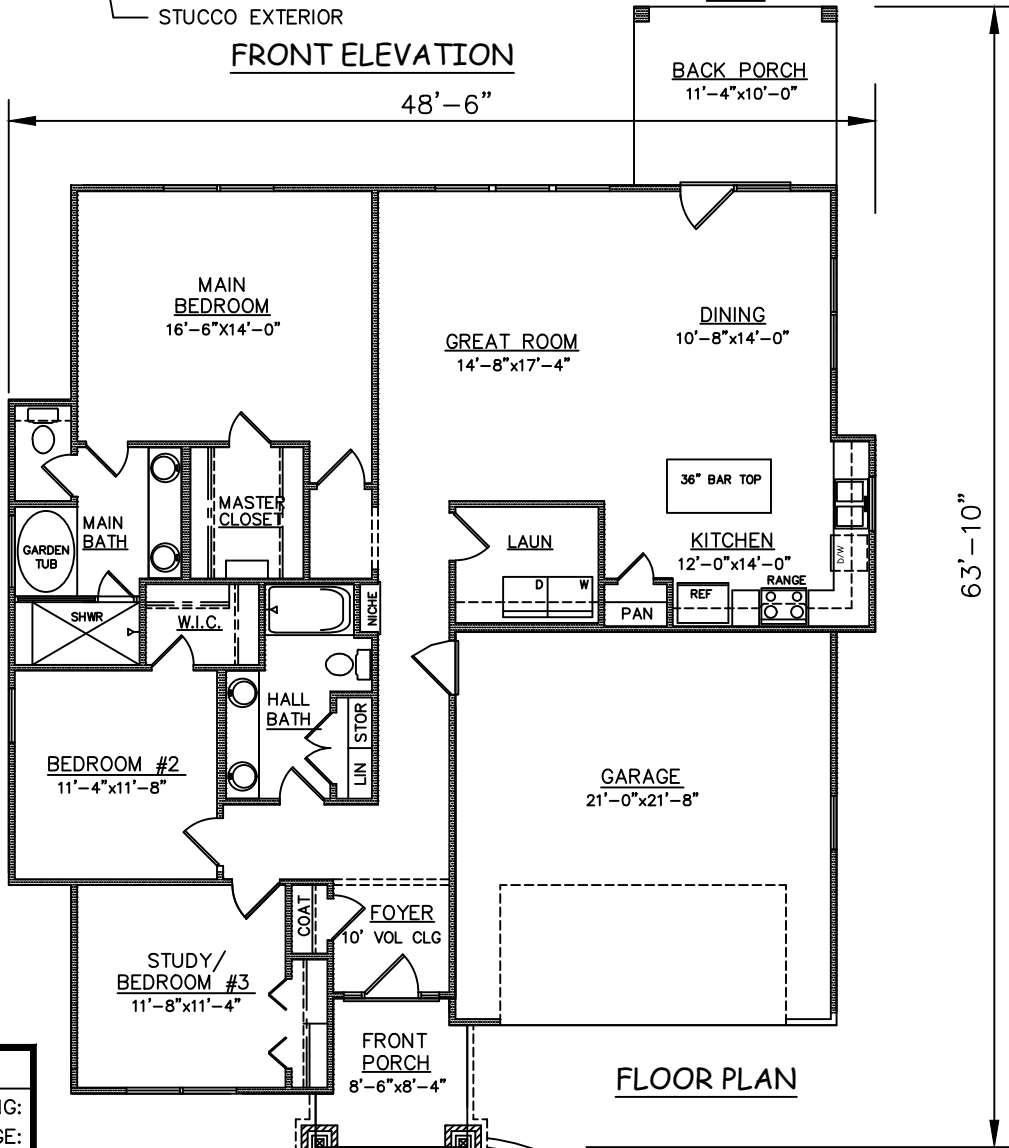
STUCCO EXTERIOR

**FRONT ELEVATION**

48'-6"

PATIO

BACK PORCH  
11'-4"x10'-0"



63'-10"

**FLOOR PLAN**

PLAN NO.  
CW1708/2354

**SQUARE FOOTAGE**

1708	LIVING:
469	GARAGE:
64	FRONT PORCH:
113	BACK PORCH:
2354	TOTAL:

3805 COMMUNITY ROAD  
BRUNSWICK, GEORGIA  
(912)265-3021  
www.driggerhomes.com



SERVING GLYNN COUNTY  
SINCE 1962