

D

38 MILLPOND CIRCLE  
LOT 181 COUNTRY WALK, PH. II

1501

D

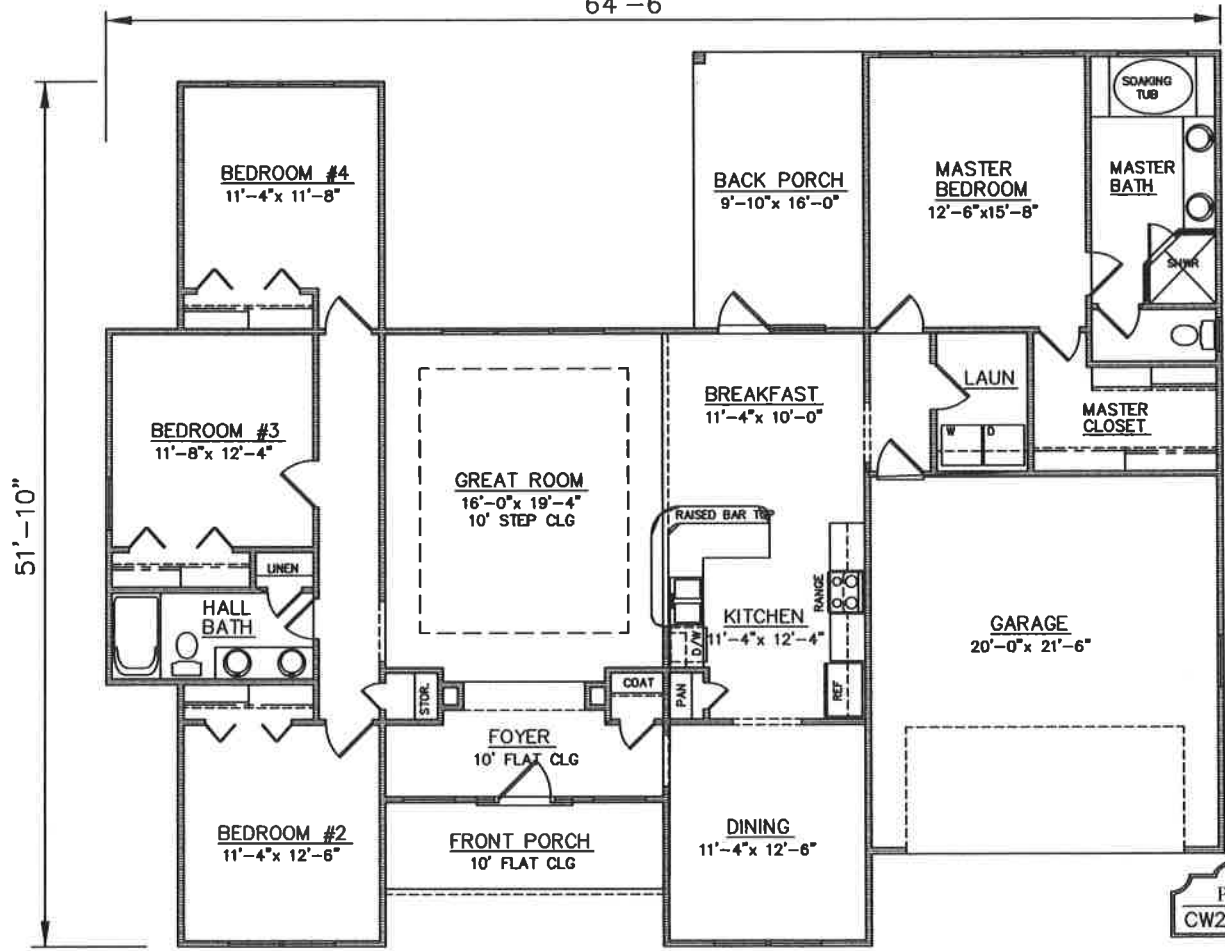


STONE FINISH

**FRONT ELEVATION**

STUCCO EXTERIOR

64'-6"



**FLOOR PLAN**

PLAN NO.  
CW2065\2746

**SQUARE FOOTAGE**

Heated Sq. Ft.:	2065
Garage:	444
Front Porch:	80
Back Porch:	157
Total Under Roof:	2746

3805 COMMUNITY ROAD  
BRUNSWICK, GEORGIA  
(912)265-3021  
www.driggershomes.com



SERVING GLYNN COUNTY  
SINCE 1962

THE INFORMATION, PLANS, SPECIFICATIONS, AND DESIGNS APPEARING IN THESE DRAWINGS ARE THE PROPERTY OF DRIGGERS HOMES, INC.; ANY UNAUTHORIZED USE OR DUPLICATION IN WHOLE OR IN PART IS STRICTLY PROHIBITED.

**NEW HOME COLLECTION**

THESE ARE RENDERINGS ONLY. ACTUAL FLOOR PLANS & ELEVATIONS MAY VARY FROM DRAWINGS.