

D

1502

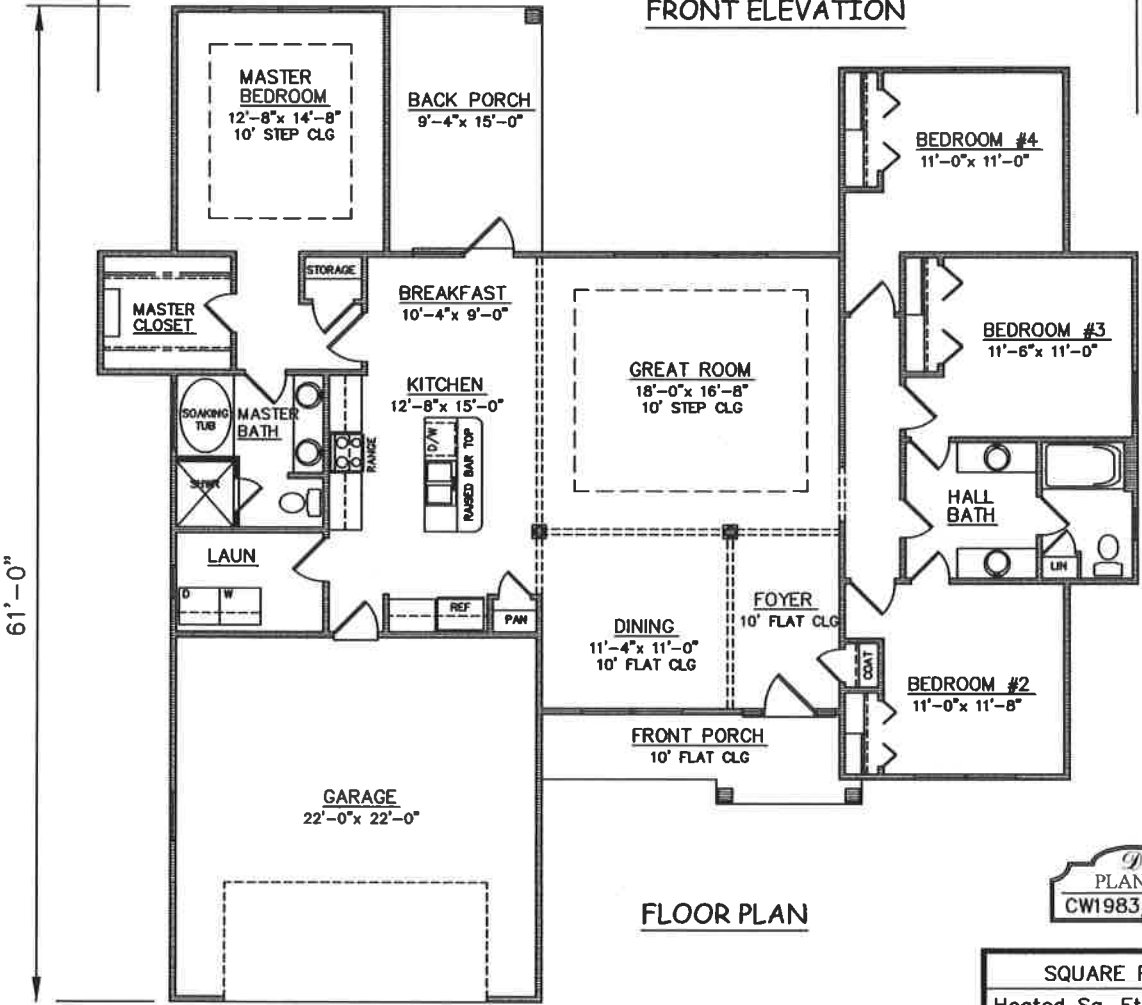
COUNTRY WALK CIRCLE

D



63'-6" STUCCO EXTERIOR

FRONT ELEVATION



61'-0"

FLOOR PLAN

PLAN NO.
CW1983/2714

SQUARE FOOTAGE	
Heated Sq. Ft.:	1983
Garage:	505
Front Porch:	86
Back Porch:	140
Total Under Roof:	2714

3805 COMMUNITY ROAD
BRUNSWICK, GEORGIA
(912)265-3021
www.driggershomes.com



SERVING GLYNN COUNTY
SINCE 1962

THE INFORMATION, PLANS, SPECIFICATIONS, AND DESIGNS APPEARING IN THESE DRAWINGS ARE THE PROPERTY OF DRIGGERS HOMES, INC.; ANY UNAUTHORIZED USE OR DUPLICATION IN WHOLE OR IN PART IS STRICTLY PROHIBITED.

NEW HOME COLLECTION

THESE ARE RENDERINGS ONLY. ACTUAL FLOOR PLANS & ELEVATIONS MAY VARY FROM DRAWINGS.