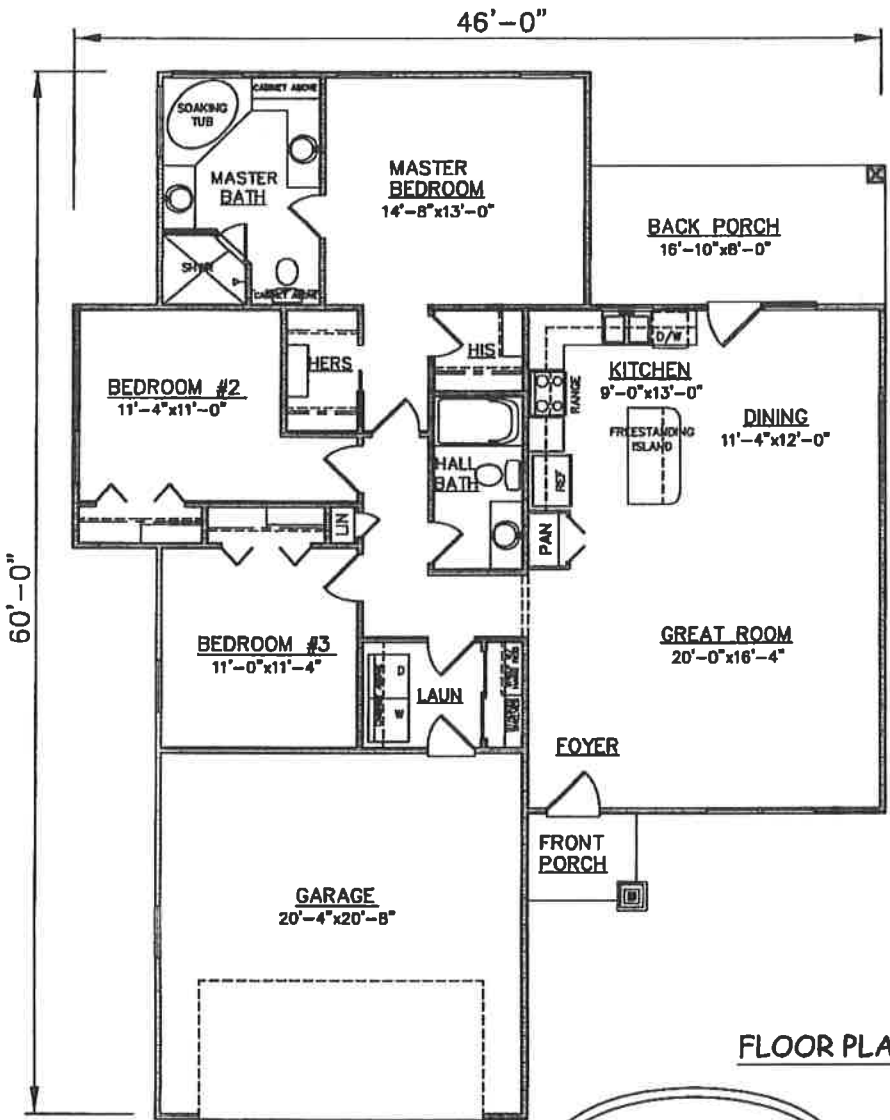


FRONT ELEVATION

LAP VINYL SIDING



FLOOR PLAN

PLAN NO.
SW1525/2131

SQUARE FOOTAGE	
LIVING:	1525
GARAGE:	440
FRONT PORCH:	31
BACK PORCH:	135
TOTAL:	2131

3805 COMMUNITY ROAD
BRUNSWICK, GEORGIA
(912)265-3021
www.driggershomes.com



SERVING GLYNN COUNTY
SINCE 1962

NEW HOME COLLECTION

THE INFORMATION, PLANS, SPECIFICATIONS, AND DESIGNS APPEARING IN THESE DRAWINGS ARE THE PROPERTY OF DRIGGERS HOMES, INC.; ANY UNAUTHORIZED USE OR DUPLICATION IN WHOLE OR IN PART IS STRICTLY PROHIBITED.

THESE ARE RENDERINGS ONLY. ACTUAL FLOOR PLANS & ELEVATIONS MAY VARY FROM DRAWINGS.