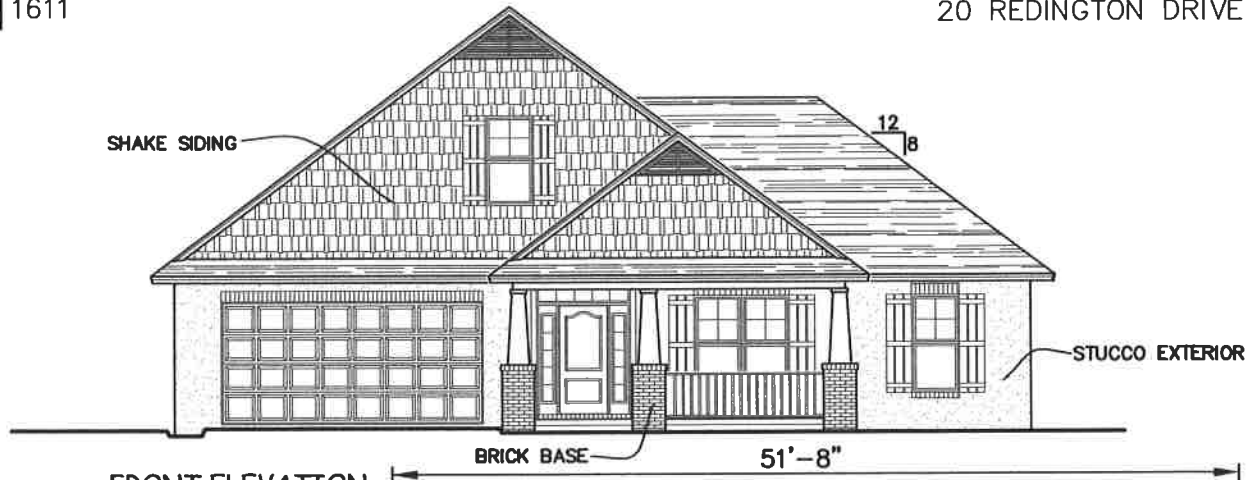


D 1611

20 REDINGTON DRIVE D



FRONT ELEVATION



FLOOR PLAN

PLAN NO.  
CW1760/2790

SQUARE FOOTAGE	
LIVING:	1760
Bonus:	348
Total Heated Area:	2100
GARAGE:	448
FRONT PORCH:	125
BACK PORCH:	125
TOTAL:	2790

3805 COMMUNITY ROAD  
BRUNSWICK, GEORGIA  
(912)265-3021  
www.driggershomes.com



SERVING GLYNN COUNTY  
SINCE 1962

THE INFORMATION, PLANS, SPECIFICATIONS, AND DESIGNS APPEARING IN THESE DRAWINGS ARE THE PROPERTY OF DRIGGERS HOMES, INC.; ANY UNAUTHORIZED USE OR DUPLICATION IN WHOLE OR IN PART IS STRICTLY PROHIBITED.

NEW HOME COLLECTION

THESE ARE RENDERINGS ONLY. ACTUAL FLOOR PLANS & ELEVATIONS MAY VARY FROM DRAWINGS.