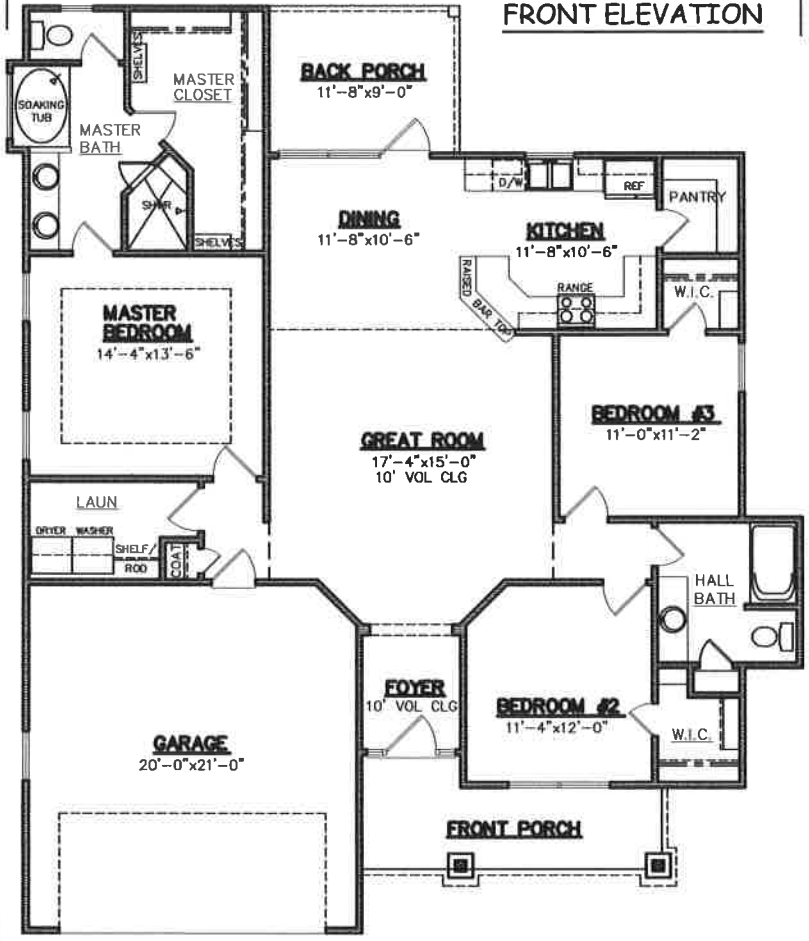




STUCCO EXTERIOR

48'-6"

FRONT ELEVATION



56'-10"

FLOOR PLAN

**PLAN NO.**  
SW1623/2268

**SQUARE FOOTAGE**

Heated Sq. Ft.:	1623
Garage:	435
Front Porch:	105
Back Porch:	105
<b>Total Under Roof:</b>	<b>2268</b>

3805 COMMUNITY ROAD  
BRUNSWICK, GEORGIA  
(912)265-3021  
www.driggerhomes.com



SERVING GLYNN COUNTY  
SINCE 1962

THE INFORMATION, PLANS, SPECIFICATIONS, AND DESIGNS APPEARING IN THESE DRAWINGS ARE THE PROPERTY OF DRIGGERS HOMES, INC.; ANY UNAUTHORIZED USE OR DUPLICATION IN WHOLE OR IN PART IS STRICTLY PROHIBITED.

**NEW HOME COLLECTION**

THESE ARE RENDERINGS ONLY. ACTUAL FLOOR PLANS & ELEVATIONS MAY VARY FROM DRAWINGS.