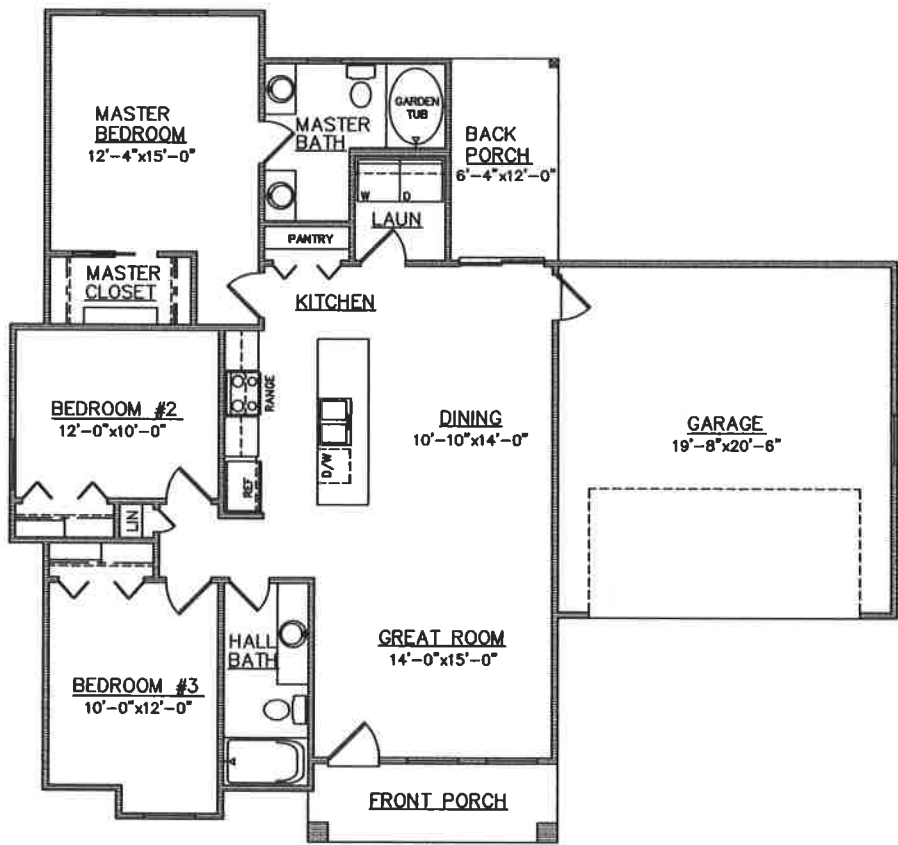




FRONT ELEVATION



FLOOR PLAN

PLAN NO.
 BW1293/1860

| SQUARE FOOTAGE | |
|-------------------|------|
| Heated Sq. Ft.: | 1293 |
| Garage: | 423 |
| Front Porch: | 68 |
| Back Porch: | 76 |
| Total Under Roof: | 1860 |

3805 COMMUNITY ROAD
 BRUNSWICK, GEORGIA
 (912)265-3021
 www.driggershomes.com



SERVING GLYNN COUNTY
 SINCE 1962

THE INFORMATION, PLANS, SPECIFICATIONS, AND DESIGNS APPEARING IN THESE DRAWINGS ARE THE PROPERTY OF DRIGGERS HOMES, INC.; ANY UNAUTHORIZED USE OR DUPLICATION IN WHOLE OR IN PART IS STRICTLY PROHIBITED.

NEW HOME COLLECTION

THESE ARE RENDERINGS ONLY. ACTUAL FLOOR PLANS & ELEVATIONS MAY VARY FROM DRAWINGS.