

D 1805

1022 CLEARVIEW LANE

D

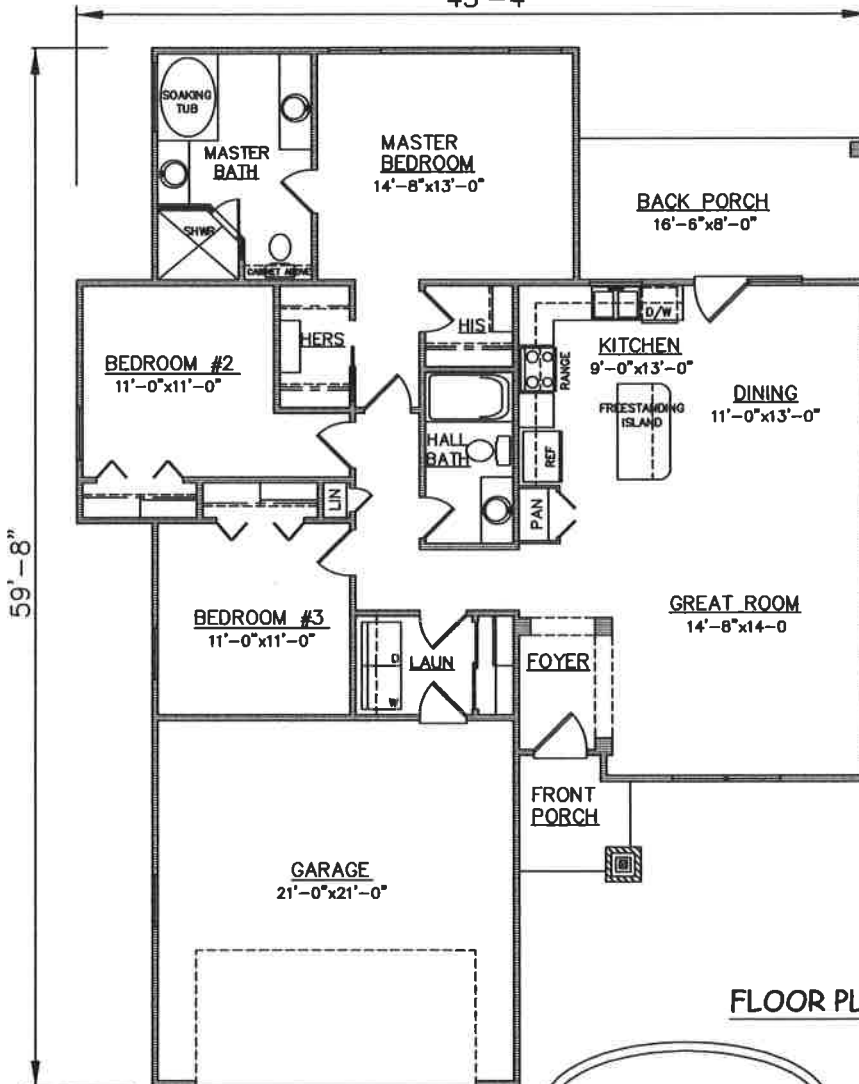


BRICK FND AT FRONT

FRONT ELEVATION

LAP VINYL SIDING

45'-4"



59'-8"

FLOOR PLAN

PLAN NO.
SW1490/2100

SQUARE FOOTAGE	
LIVING:	1490
GARAGE:	440
FRONT PORCH:	38
BACK PORCH:	132
TOTAL:	2100

3805 COMMUNITY ROAD
BRUNSWICK, GEORGIA
(912)265-3021
www.driggershomes.com

DRH
DRIGGERS
SINCE **HOMES** 1962

SERVING GLYNN COUNTY
SINCE 1962

THE INFORMATION, PLANS, SPECIFICATIONS, AND DESIGNS APPEARING IN THESE DRAWINGS ARE THE PROPERTY OF DRIGGERS HOMES, INC.; ANY UNAUTHORIZED USE OR DUPLICATION IN WHOLE OR IN PART IS STRICTLY PROHIBITED.

NEW HOME COLLECTION

THESE ARE RENDERINGS ONLY. ACTUAL FLOOR PLANS & ELEVATIONS MAY VARY FROM DRAWINGS.