

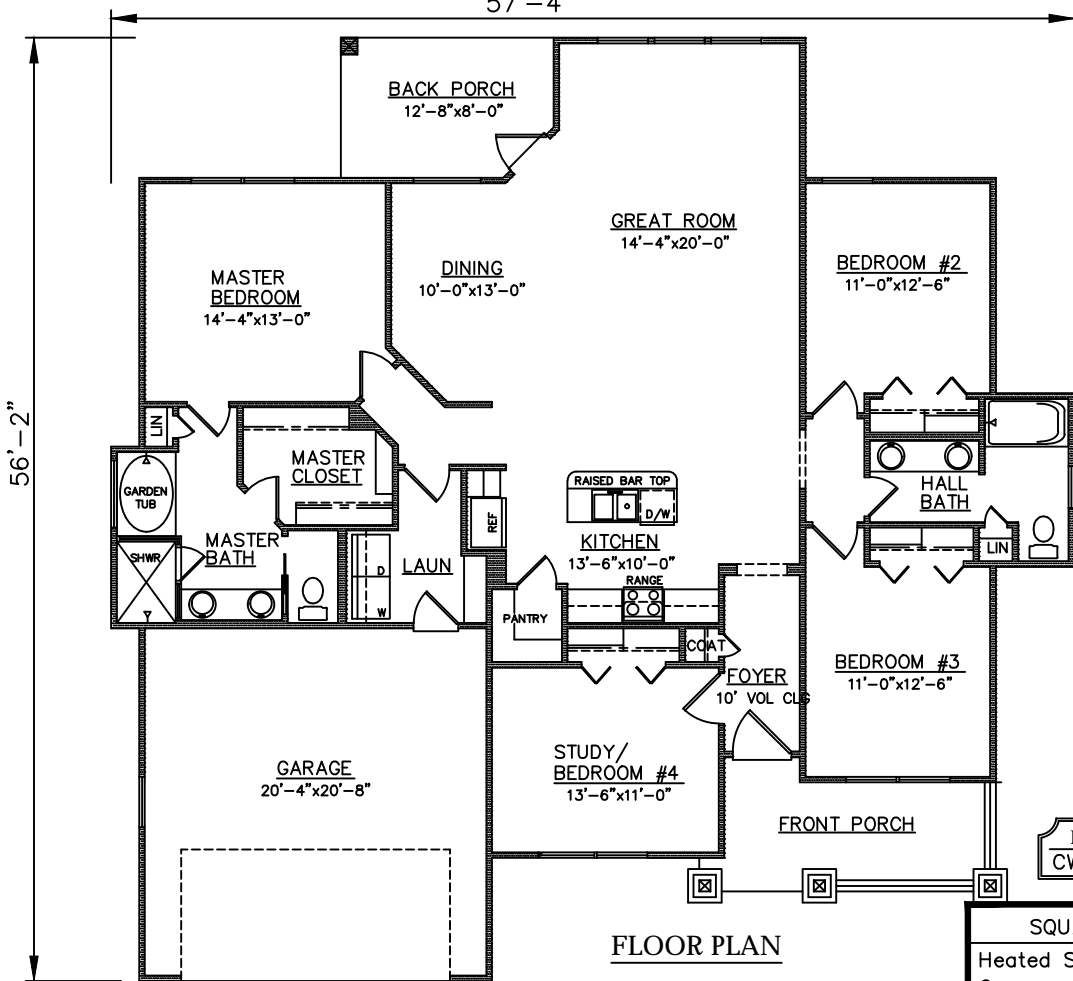
D 1910

218 SWEETWATER BOULEVARD



LAP VINYL SIDING FRONT ELEVATION

57'-4"



FLOOR PLAN

PLAN NO.
CW1899/2551

SQUARE FOOTAGE

Heated Sq. Ft.:	1899
Garage:	436
Front Porch:	115
Back Porch:	101
Total Under Roof:	2551

3805 COMMUNITY ROAD
BRUNSWICK, GEORGIA
(912)265-3021
www.driggershomes.com



SERVING GLYNN COUNTY
SINCE 1962

THE INFORMATION, PLANS, SPECIFICATIONS, AND DESIGNS APPEARING IN THESE DRAWINGS ARE THE PROPERTY OF DRIGGERS HOMES, INC.; ANY UNAUTHORIZED USE OR DUPLICATION IN WHOLE OR IN PART IS STRICTLY PROHIBITED.

NEW HOME COLLECTION

THESE ARE RENDERINGS ONLY. ACTUAL FLOOR PLANS & ELEVATIONS MAY VARY FROM DRAWINGS.