

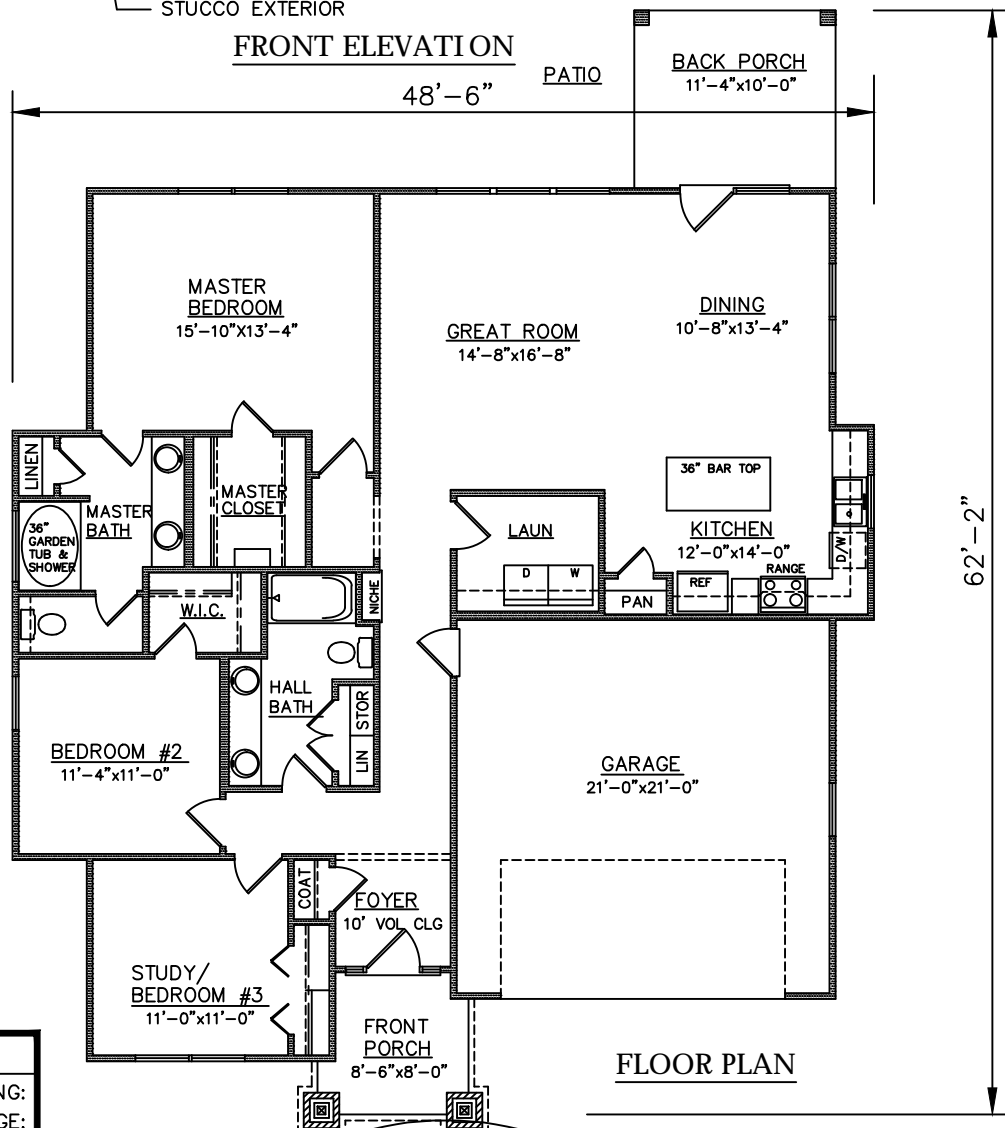


STUCCO EXTERIOR

FRONT ELEVATION

48'-6"

PATIO

BACK PORCH
11'-4"x10'-0"

FLOOR PLAN

PLAN NO.
SW1634/2264

SQUARE FOOTAGE

1634	LIVING:
456	GARAGE:
61	FRONT PORCH:
113	BACK PORCH:
2264	TOTAL:

3805 COMMUNITY ROAD
BRUNSWICK, GEORGIA
(912)265-3021
www.driggershomes.com

DRIGGERS
HOMES

SERVING GLYNN COUNTY
SINCE 1962