

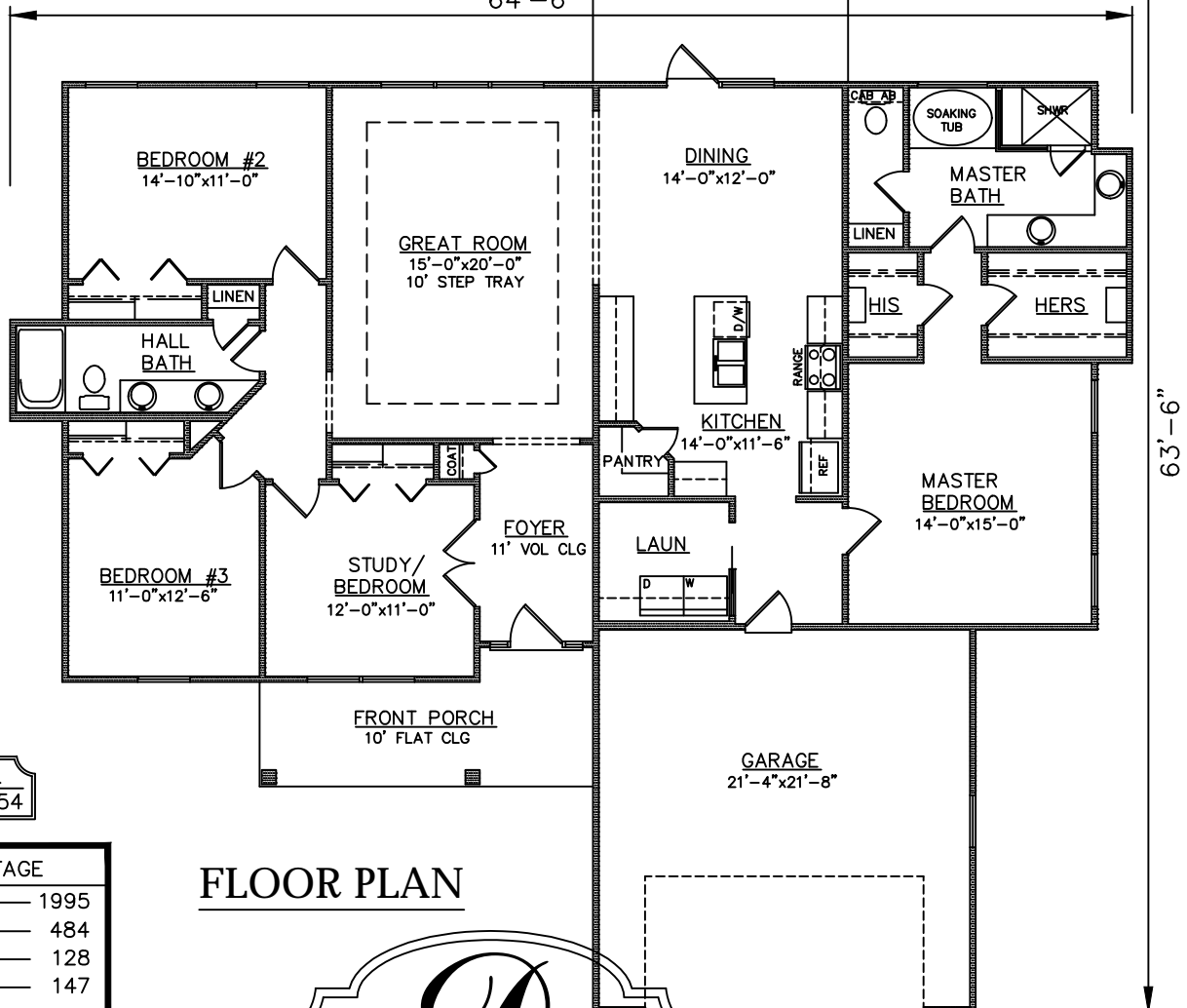


STUCCO
EXTERIOR

FRONT ELEVATION

BACK PORCH
14'-8"x10'-0"

64'-6"



PLAN NO.
CW1995/2754

SQUARE FOOTAGE

Heated Sq. Ft.: — 1995
Garage: — 484
Front Porch: — 128
Back Porch: — 147
Total Under Roof: — 2754

FLOOR PLAN

**DRIGGERS
HOMES**

3805 COMMUNITY ROAD
BRUNSWICK, GEORGIA
(912)265-3021
www.driggershomes.com

SERVING GLYNN COUNTY
SINCE 1962

THE INFORMATION, PLANS, SPECIFICATIONS, AND
DESIGNS APPEARING IN THESE DRAWINGS ARE THE
PROPERTY OF DRIGGERS HOMES, INC.; ANY
UNAUTHORIZED USE OR DUPLICATION IN WHOLE
OR IN PART IS STRICTLY PROHIBITED.

NEW HOME COLLECTION

THESE ARE RENDERINGS ONLY. ACTUAL
FLOOR PLANS & ELEVATIONS MAY
VARY FROM DRAWINGS.