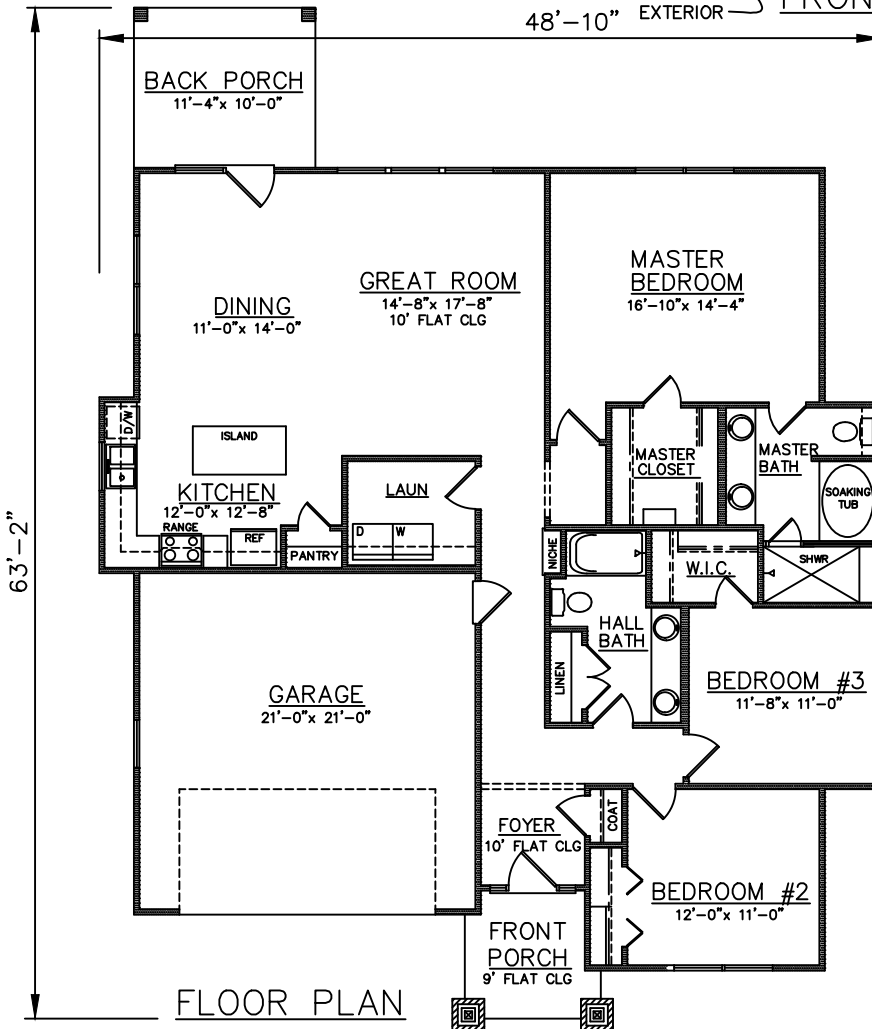




48'-10" STUCCO EXTERIOR FRONT ELEVATION



FLOOR PLAN

PLAN NO.
CW1710/2340

SQUARE FOOTAGE	
LIVING:	1710
GARAGE:	456
FRONT PORCH:	61
BACK PORCH:	113
TOTAL:	2340

3805 COMMUNITY ROAD
BRUNSWICK, GEORGIA
(912)265-3021
www.driggerhomes.com



SERVING GLYNN COUNTY
SINCE 1962

THE INFORMATION, PLANS, SPECIFICATIONS, AND DESIGNS APPEARING IN THESE DRAWINGS ARE THE PROPERTY OF DRIGGERS HOMES, INC.; ANY UNAUTHORIZED USE OR DUPLICATION IN WHOLE OR IN PART IS STRICTLY PROHIBITED.

NEW HOME COLLECTION

THESE ARE RENDERINGS ONLY. ACTUAL FLOOR PLANS & ELEVATIONS MAY VARY FROM DRAWINGS.