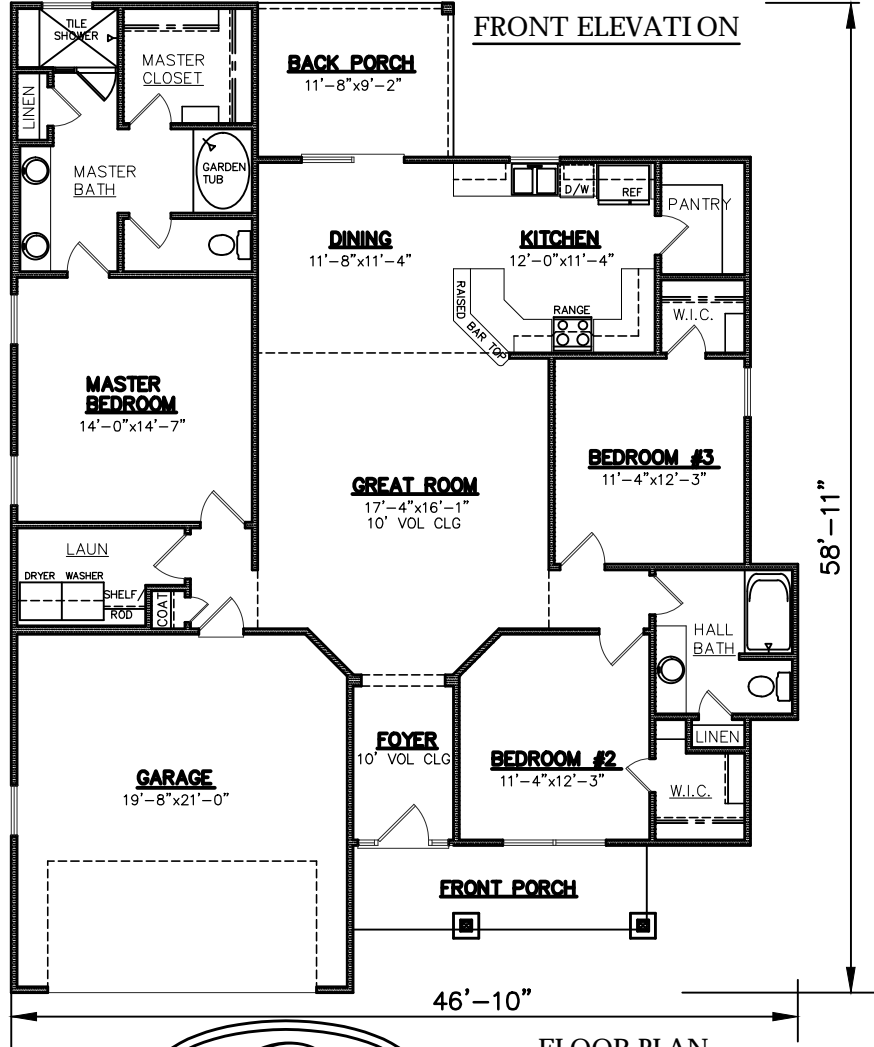




STUCCO EXTERIOR



FRONT ELEVATION

FLOOR PLAN

PLAN NO.  
CW1716/2336

SQUARE FOOTAGE	
Heated Sq. Ft.:	1716
Garage:	426
Front Porch:	87
Back Porch:	95
Total Under Roof:	2336

3805 COMMUNITY ROAD  
BRUNSWICK, GEORGIA  
(912)265-3021  
www.driggershomes.com



SERVING GLYNN COUNTY  
SINCE 1962

THE INFORMATION, PLANS, SPECIFICATIONS, AND DESIGNS APPEARING IN THESE DRAWINGS ARE THE PROPERTY OF DRIGGERS HOMES, INC.; ANY UNAUTHORIZED USE OR DUPLICATION IN WHOLE OR IN PART IS STRICTLY PROHIBITED.

THESE ARE RENDERINGS ONLY. ACTUAL FLOOR PLANS & ELEVATIONS MAY VARY FROM DRAWINGS.

NEW HOME COLLECTION