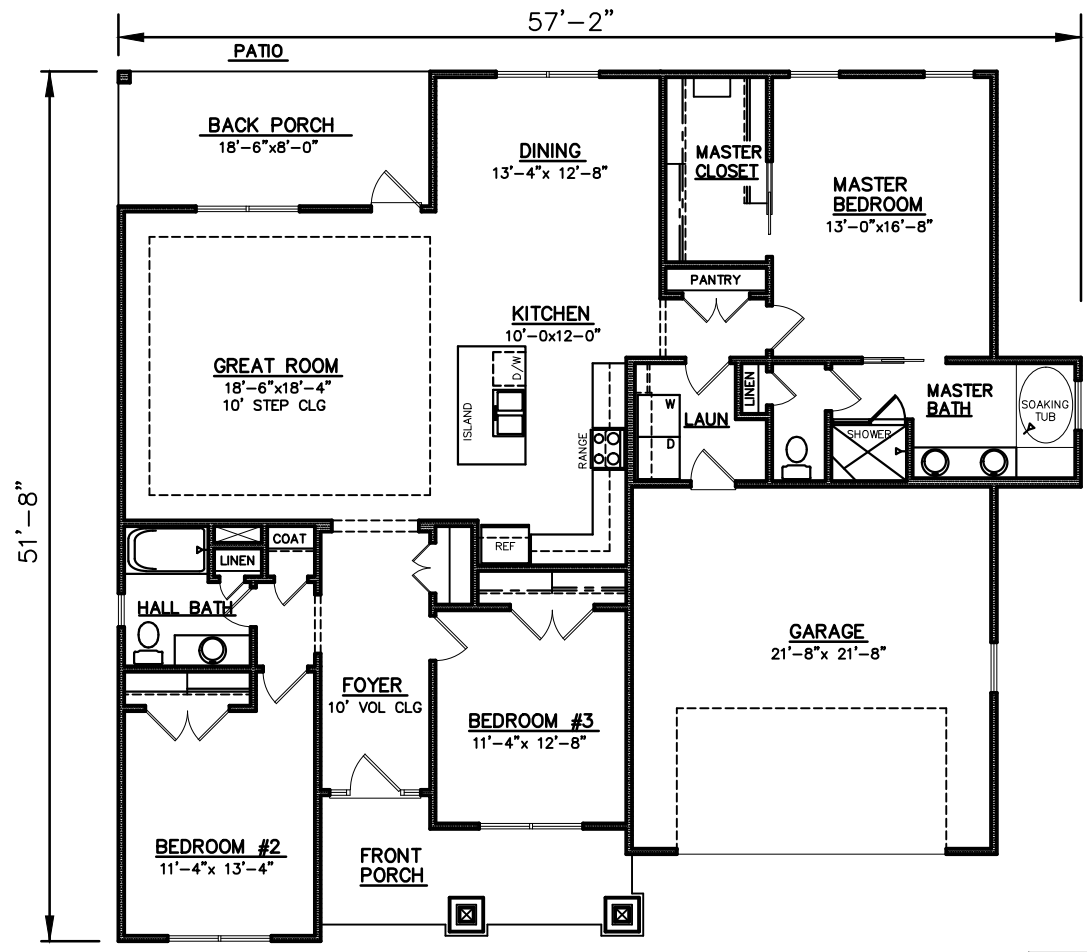
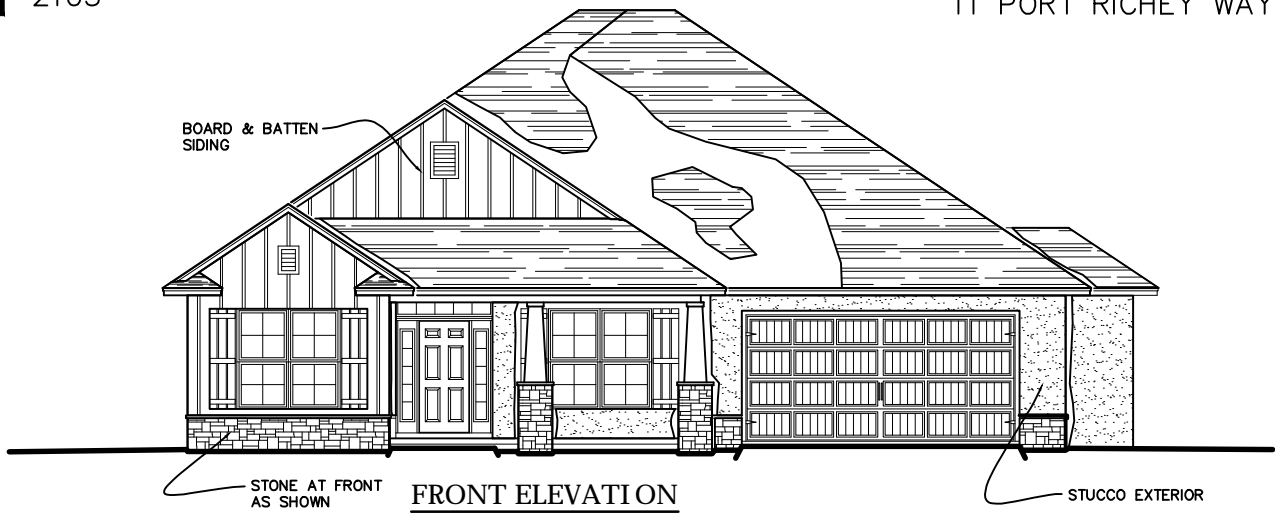


D

2103

11 PORT RICHEY WAY

D



FLOOR PLAN

PLAN NO.
CW1864/2603

SQUARE FOOTAGE	
Heated Sq. Ft.:	1864
Garage:	474
Front Porch:	117
Back Porch:	148
Total Under Roof:	2603

3805 COMMUNITY ROAD
BRUNSWICK, GEORGIA
(912)265-3021
www.driggerhomes.com



SERVING GLYNN COUNTY
SINCE 1962

THE INFORMATION, PLANS, SPECIFICATIONS, AND DESIGNS APPEARING IN THESE DRAWINGS ARE THE PROPERTY OF DRIGGERS HOMES, INC.; ANY UNAUTHORIZED USE OR DUPLICATION IN WHOLE OR IN PART IS STRICTLY PROHIBITED.

NEW HOME COLLECTION

THESE ARE RENDERINGS ONLY. ACTUAL FLOOR PLANS & ELEVATIONS MAY VARY FROM DRAWINGS.