

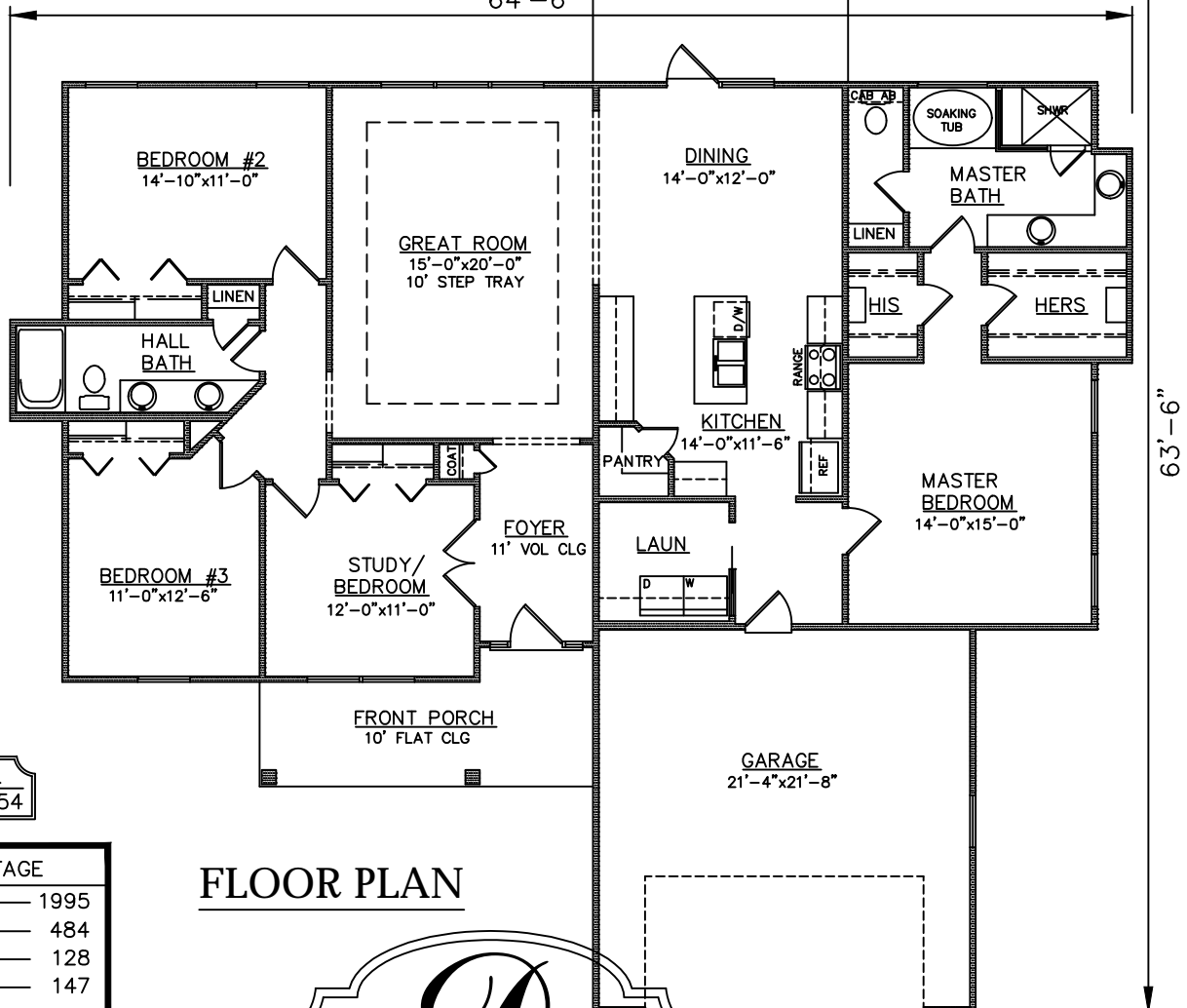


STUCCO  
EXTERIOR

## FRONT ELEVATION

BACK PORCH  
14'-8"x10'-0"

64'-6"



PLAN NO.  
CW1995/2754

### SQUARE FOOTAGE

Heated Sq. Ft.: — 1995  
Garage: — 484  
Front Porch: — 128  
Back Porch: — 147  
Total Under Roof: — 2754

## FLOOR PLAN

**DRIGGERS  
HOMES**

3805 COMMUNITY ROAD  
BRUNSWICK, GEORGIA  
(912)265-3021  
www.driggershomes.com

SERVING GLYNN COUNTY  
SINCE 1962

THE INFORMATION, PLANS, SPECIFICATIONS, AND  
DESIGNS APPEARING IN THESE DRAWINGS ARE THE  
PROPERTY OF DRIGGERS HOMES, INC.; ANY  
UNAUTHORIZED USE OR DUPLICATION IN WHOLE  
OR IN PART IS STRICTLY PROHIBITED.

## NEW HOME COLLECTION

THESE ARE RENDERINGS ONLY. ACTUAL  
FLOOR PLANS & ELEVATIONS MAY  
VARY FROM DRAWINGS.