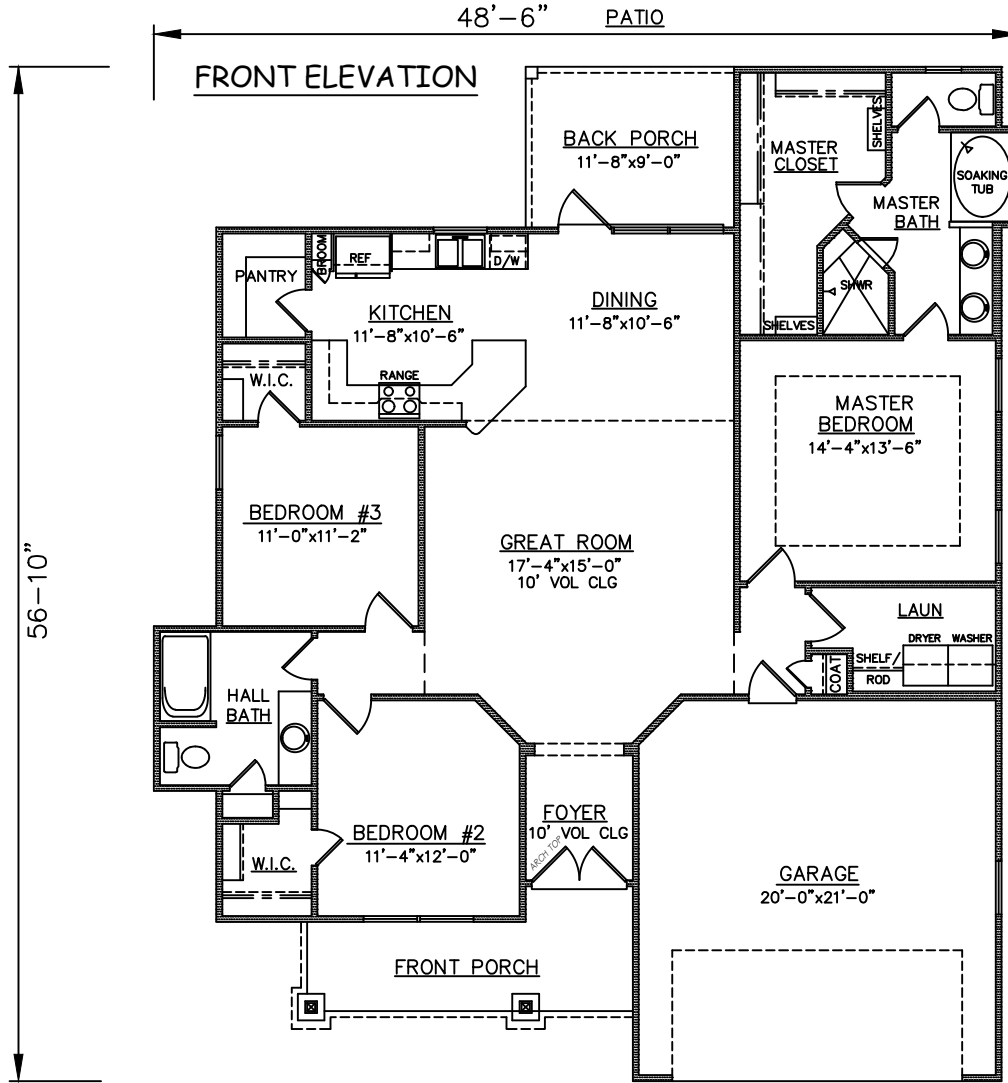




STUCCO EXTERIOR



FLOOR PLAN

PLAN NO.
SW1623/2265

SQUARE FOOTAGE	
1623	Heated Sq. Ft.:
435	Garage:
105	Front Porch:
105	Back Porch:
2265	Total Under Roof:

3805 COMMUNITY ROAD
BRUNSWICK, GEORGIA
(912)265-3021
www.driggerhomes.com



SERVING GLYNN COUNTY
SINCE 1962

THE INFORMATION, PLANS, SPECIFICATIONS, AND DESIGNS APPEARING IN THESE DRAWINGS ARE THE PROPERTY OF DRIGGERS HOMES, INC.; ANY UNAUTHORIZED USE OR DUPLICATION IN WHOLE OR IN PART IS STRICTLY PROHIBITED.

NEW HOME COLLECTION

THESE ARE RENDERINGS ONLY. ACTUAL FLOOR PLANS & ELEVATIONS MAY VARY FROM DRAWINGS.