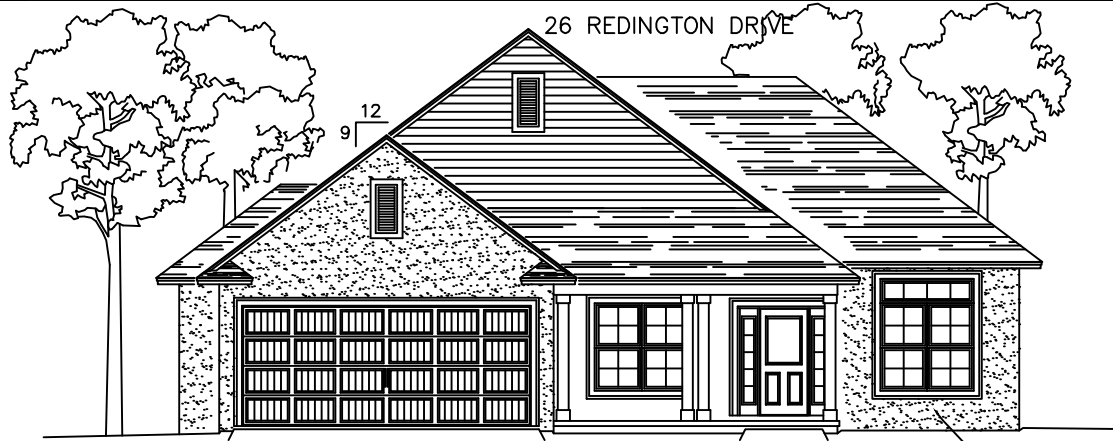


D

1816

26 REDINGTON DRIVE

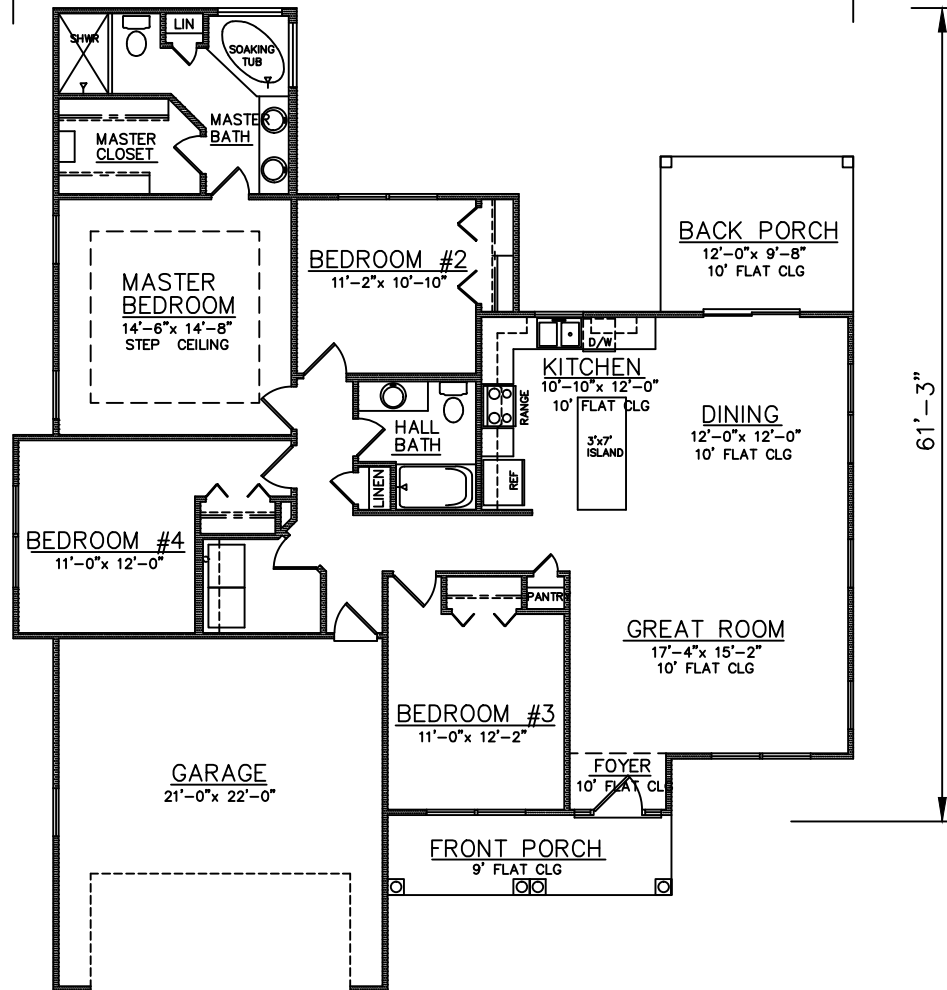
D



FRONT ELEVATION

52'-4"

STUCCO EXTERIOR



FLOOR PLAN

PLAN NO.  
CW1716/2375

SQUARE FOOTAGE

|                   |      |
|-------------------|------|
| Heated Sq. Ft.:   | 1716 |
| Garage:           | 455  |
| Front Porch:      | 88   |
| Back Porch:       | 116  |
| Total Under Roof: | 2375 |



3805 COMMUNITY ROAD  
BRUNSWICK, GEORGIA  
(912)265-3021  
www.driggershomes.com

SERVING GLYNN COUNTY  
SINCE 1962

THE INFORMATION, PLANS, SPECIFICATIONS, AND DESIGNS APPEARING IN THESE DRAWINGS ARE THE PROPERTY OF DRIGGERS HOMES, INC.; ANY UNAUTHORIZED USE OR DUPLICATION IN WHOLE OR IN PART IS STRICTLY PROHIBITED.

NEW HOME COLLECTION

THESE ARE RENDERINGS ONLY. ACTUAL FLOOR PLANS & ELEVATIONS MAY VARY FROM DRAWINGS.