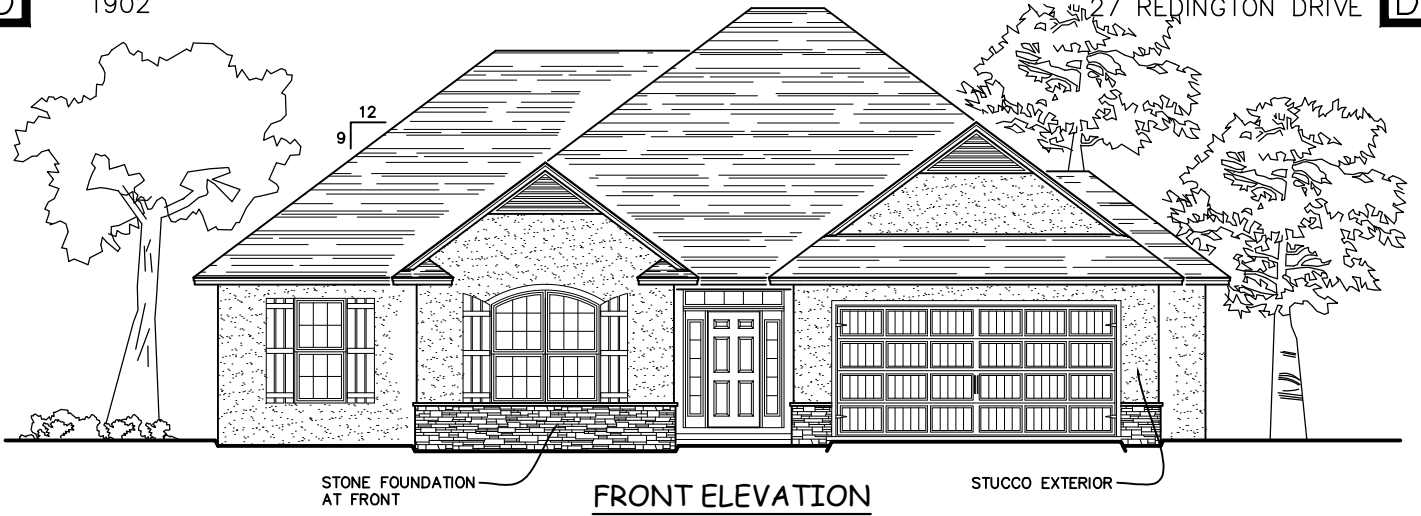


D

1902

27 REDINGTON DRIVE

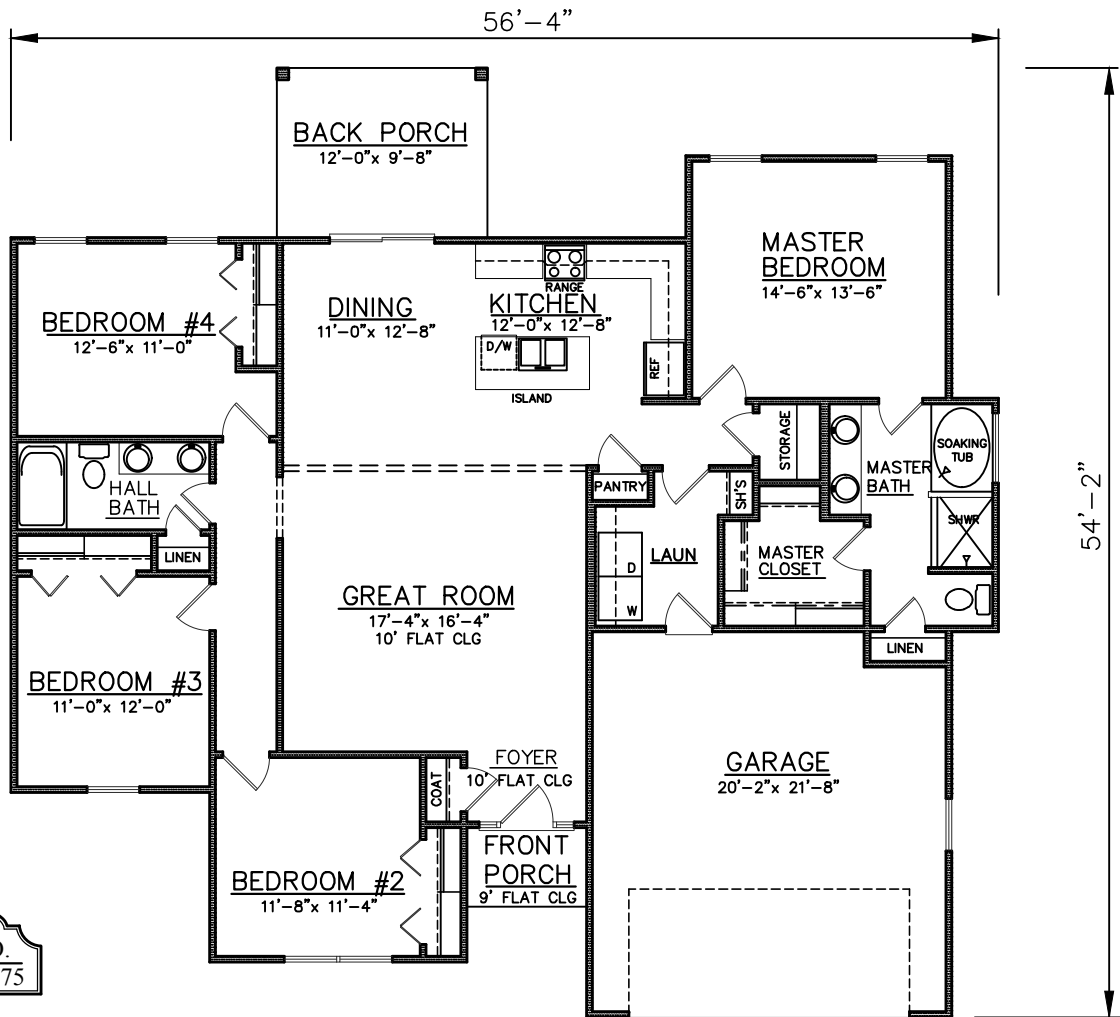
D



STONE FOUNDATION AT FRONT

**FRONT ELEVATION**

STUCCO EXTERIOR



**FLOOR PLAN**

*D*  
**PLAN NO.**  
 CW1784/2375

SQUARE FOOTAGE	
Heated Sq. Ft.:	1784
Garage:	445
Front Porch:	30
Back Porch:	116
<b>Total Under Roof:</b>	<b>2375</b>

3805 COMMUNITY ROAD  
 BRUNSWICK, GEORGIA  
 (912)265-3021  
 www.driggershomes.com



SERVING GLYNN COUNTY  
 SINCE 1962

THE INFORMATION, PLANS, SPECIFICATIONS, AND DESIGNS APPEARING IN THESE DRAWINGS ARE THE PROPERTY OF DRIGGERS HOMES, INC. ANY UNAUTHORIZED USE OR DUPLICATION IN WHOLE OR IN PART IS STRICTLY PROHIBITED.

**NEW HOME COLLECTION**

THESE ARE RENDERINGS ONLY. ACTUAL FLOOR PLANS & ELEVATIONS MAY VARY FROM DRAWINGS.