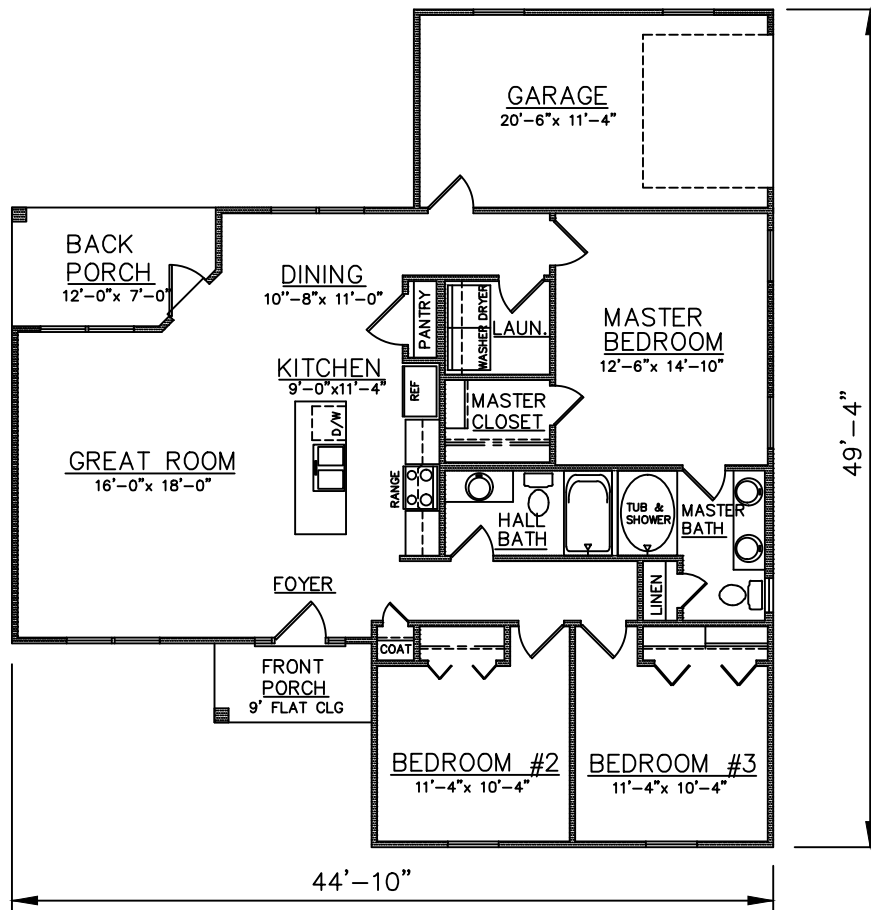




FRONT ELEVATION



FLOOR PLAN

*D*  
 PLAN NO.  
 BW1356/1725

SQUARE FOOTAGE	
Heated Sq. Ft.:	1356
Garage:	247
Front Porch:	43
Back Porch:	78
Total Under Roof:	1725

3805 COMMUNITY ROAD  
 BRUNSWICK, GEORGIA  
 (912)265-3021  
 www.driggershomes.com



SERVING GLYNN COUNTY  
 SINCE 1962

THE INFORMATION, PLANS, SPECIFICATIONS, AND DESIGNS APPEARING IN THESE DRAWINGS ARE THE PROPERTY OF DRIGGERS HOMES, INC.; ANY UNAUTHORIZED USE OR DUPLICATION IN WHOLE OR IN PART IS STRICTLY PROHIBITED.

NEW HOME COLLECTION

THESE ARE RENDERINGS ONLY. ACTUAL FLOOR PLANS & ELEVATIONS MAY VARY FROM DRAWINGS.