



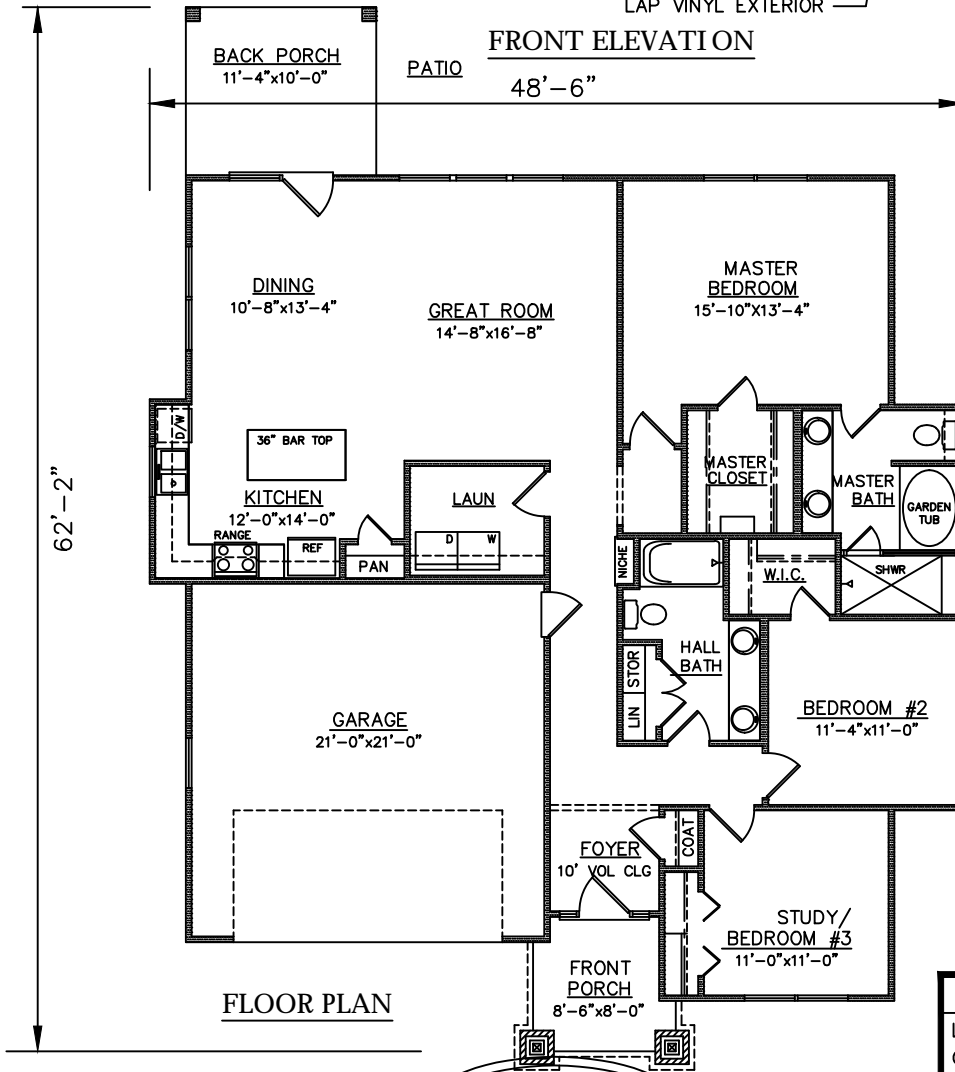
LAP VINYL EXTERIOR

FRONT ELEVATION

BACK PORCH
11'-4"x10'-0"

PATIO

48'-6"



FLOOR PLAN

PLAN NO.
SW1634/2264

SQUARE FOOTAGE	
LIVING:	1634
GARAGE:	456
FRONT PORCH:	61
BACK PORCH:	113
TOTAL:	2264

3805 COMMUNITY ROAD
BRUNSWICK, GEORGIA
(912)265-3021
www.driggershomes.com

**DRIGGERS
HOMES**

SERVING GLYNN COUNTY
SINCE 1962

THE INFORMATION, PLANS, SPECIFICATIONS, AND DESIGNS APPEARING IN THESE DRAWINGS ARE THE PROPERTY OF DRIGGERS HOMES, INC.; ANY UNAUTHORIZED USE OR DUPLICATION IN WHOLE OR IN PART IS STRICTLY PROHIBITED.

NEW HOME COLLECTION

THESE ARE RENDERINGS ONLY. ACTUAL FLOOR PLANS & ELEVATIONS MAY VARY FROM DRAWINGS.